



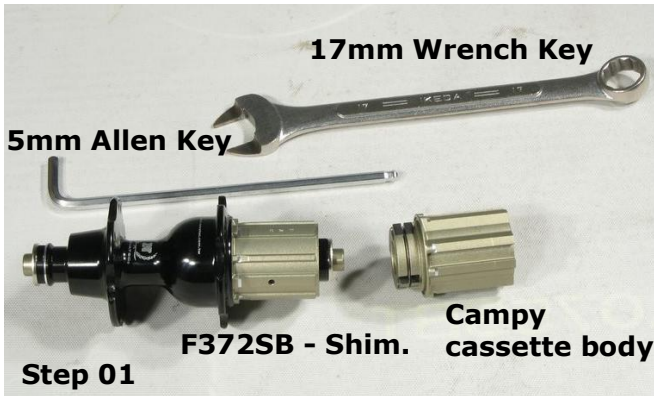
EASY 3in1 SHIM to CAMPY CASSETTE
and AXLE SYSTEM





EASY 3in1 SYSTEM

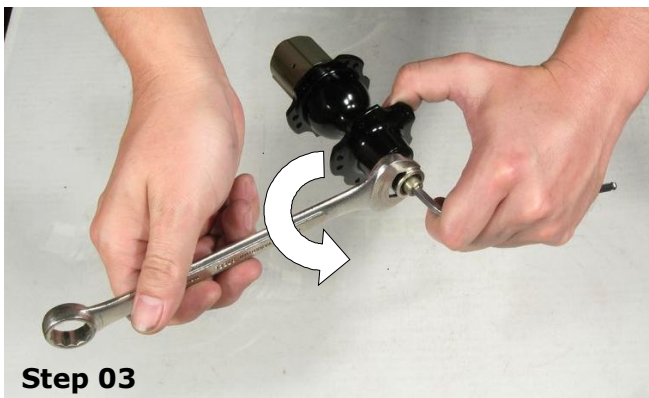
from Shim F372SB, F172SB, F162SB
to Campy F472SB, F272SB, F262SB



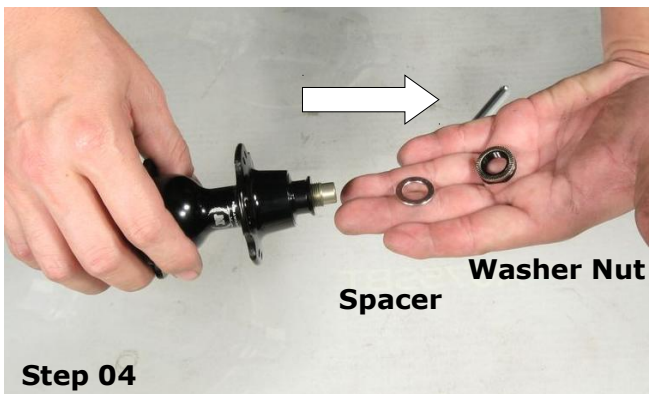
Tools: 1pc 17mm Wrench Key + 1pc 5mm Allen Key (or 2pcs of 17mm Wrench Key) + Campy cass.body



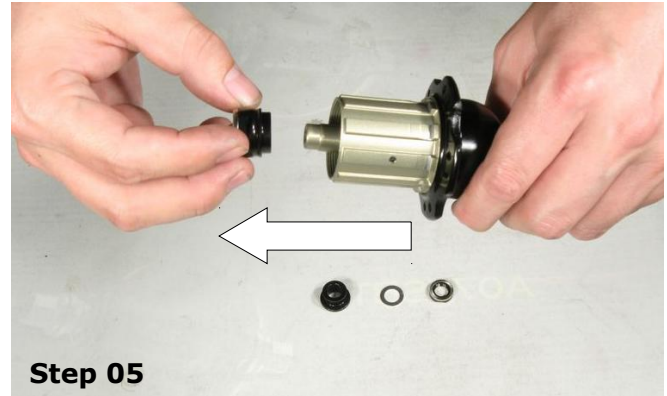
Unscrew driver side cap with wrench key in anti-clockwise direction.



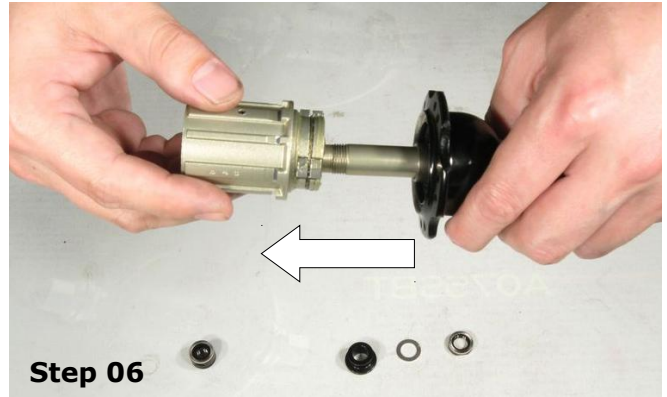
Unscrew non driver washer nut with wrench key in anti-clockwise direction.



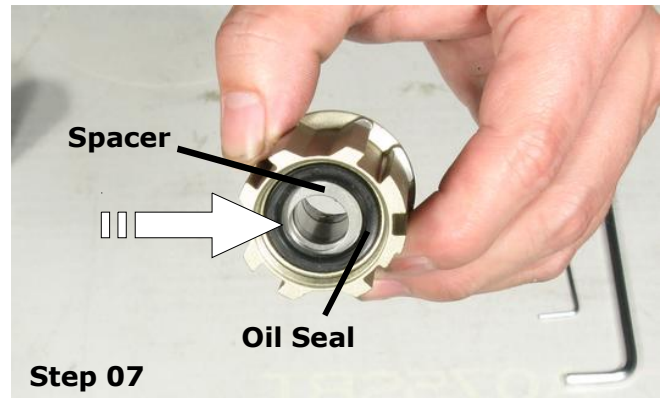
Pull out side cap spacer & washer nut.



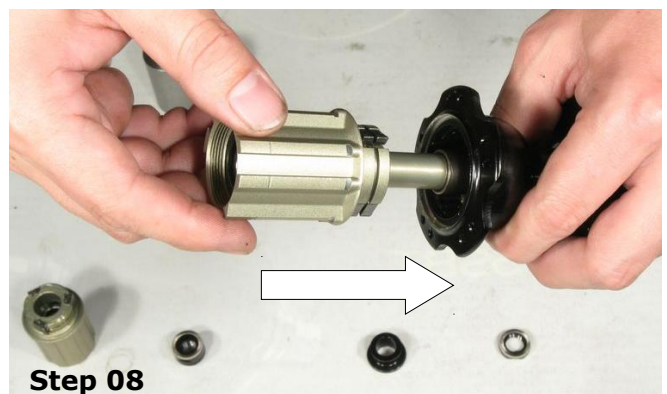
Unscrew drive side cap by hand in anti-clockwise direction & pull it out.



Pull out Shim. cassette body.



Now take **CAMPY** cassette body and SPACER push in through whole of oil seal under oil seal.



Insert Campy cassette body into the hub body.



EASY 3in1 SYSTEM

from Shim F372SB, F172SB, F162SB
to Campy F472SB, F272SB, F262SB



Step 09
Place the driver side cap on the driver side axle.



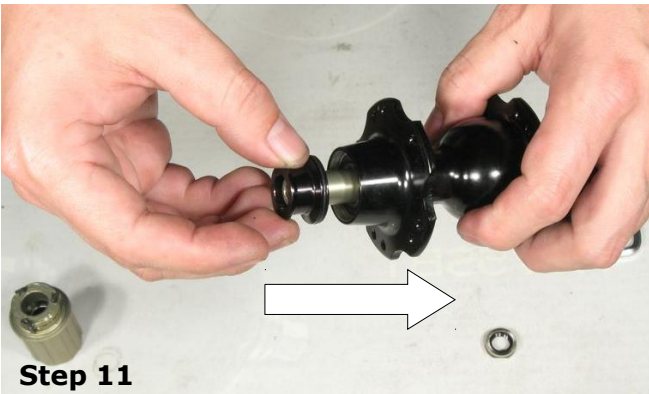
Step 13
Now tighten the washer nut by hand in clockwise direction.



Step 10
Screw drive side cap by hand in clockwise direction.



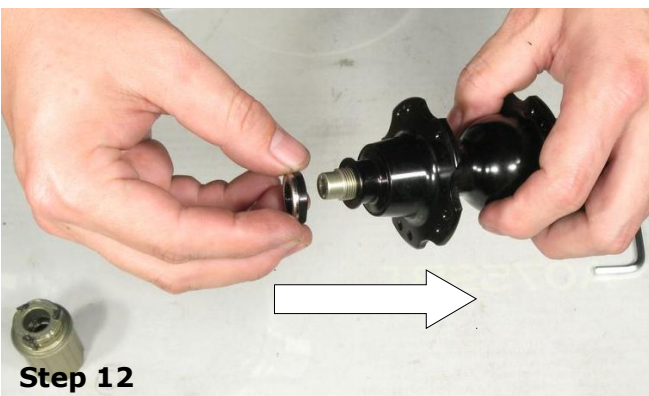
Step 14
Then tighten the hub by using wrench key in clockwise direction.



Step 11
Insert the non-driver side cap on the non-driver side threaded axle.



Step 15
Hold still allen key & tighten the non-driver side washer nut by wrench key in clockwise direction.



Step 12
Place the washer nut back.



Step 16
Job is done & we have hub with Campy cassette body, ready to use.